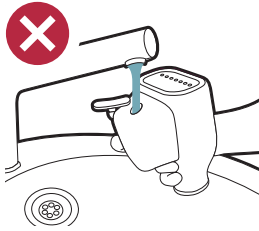
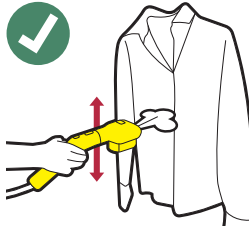


KÄRCHER

How to use



Do not fill in water



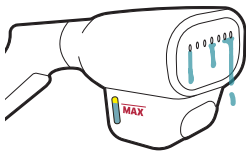
Slowly move vertically



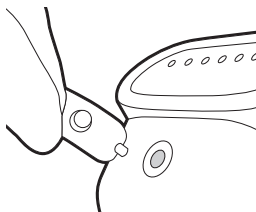
Do not incline or move fast-paced: water leakage

5.951-227.0 (02/2024)

Please mind



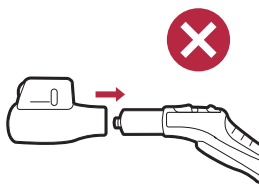
Check tank level if water leaks although used correctly



Tilt the tank backwards when opening the lid



Empty water tank if filled to max



Do not attach upside down



Water in the tank and metal plate can get hot



Do not use with metal plate facing down (e.g. on seating surfaces, ironing boards, tables)